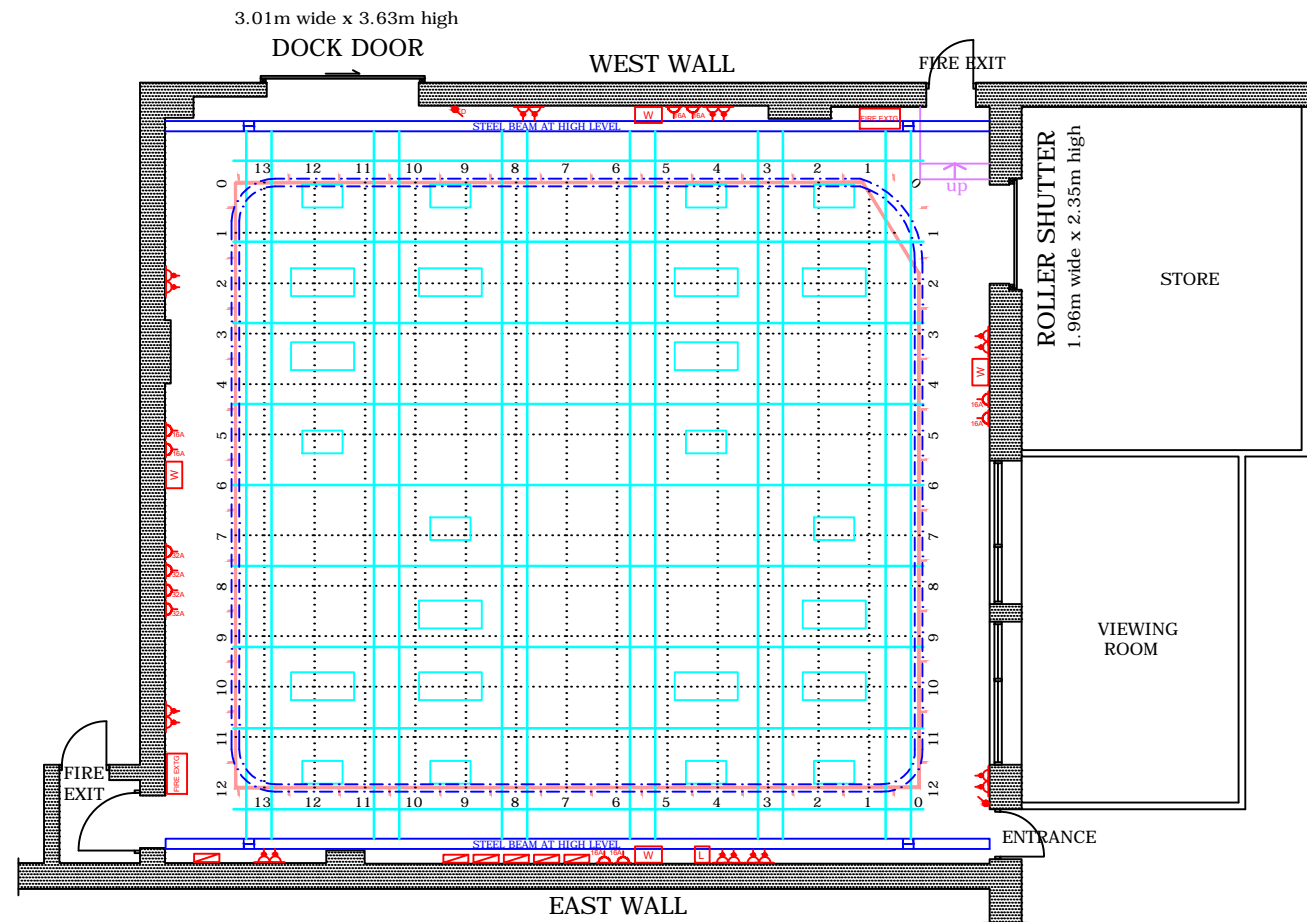


THIS DRAWING IS THE PROPERTY OF
 PINEWOOD GROUP LTD AND MUST NOT BE
 COPIED OR REPRODUCED IN WHOLE OR IN
 PART, BY ANY METHOD WHATSOEVER,
 WITHOUT PERMISSION OR THE WRITTEN
 AUTHORISATION OF PINEWOOD GROUP LTD

ALL DIMENSIONS TO BE CHECKED ON SITE
 PRIOR TO ANY COMMENCEMENT OF WORKS



PINEWOOD STUDIOS SITE PLAN



LEGEND

- WALL BOX
- VENTILATION CONTROL
- HOUSE LIGHT CONTROL
- FUSE BOX
- DOUBLE SWITCHED RCD SOCKET (DIRTY MAINS)
- TECH MAINS SOCKET - 16A - 50A
- DISTRIBUTION BOARD
- HOUSE LIGHT SWITCH
- DOOR CONTROL
- FIRE EXTINGUISHERS
- EDGE OF FIRE LANE
- FLOOR GRID
- LIGHTING GRID
- DOUBLE CYC TRACK
- AIR CONDITIONING SUPPLY DUCT
- AIR CONDITIONING EXTRACT DUCT

GENERAL NOTES
 MEAN HEIGHT TO UNDERSIDE OF LIGHTING GRID = 5.60m
 GRID TRUSS (SUSPENSION) = 200mm
 MAX CENTRE POINT LOAD = 70kg/m
 GRID TRUSS (SUSPENSION) = 200mm
 MAX CENTRE POINT LOAD = 20kg/m
 20% LOAD BETWEEN HANGERS
 MEAN HEIGHT TO UNDERSIDE OF AIR CON GRILLES = 5.40m
 FLOOR GRID 1.00m x 0.50m
 10m FLOOR GRID SHOWN ON PLAN

PROJECT MANAGEMENT DEPARTMENT

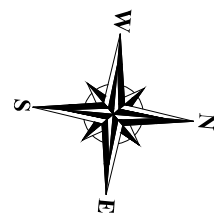
PROJECT
 PINEWOOD STUDIOS
 TV STUDIO 3

DRAWING TITLE
 EXISTING GROUND FLOOR

SCALE	DATE	DRAWN BY
1:150 @ A3	01-10-13	SDM



**TV STUDIO 3 | EXISTING GROUND FLOOR
 PINEWOOD STUDIOS**



TV STUDIO 3 DIMENSIONS	
STAGE LENGTH	= 53' 4" [16.3m]
STAGE WIDTH	= 48' 2" [14.7m]
GROUND FLOOR AREA	= 2,572 ft² [239m²]